

KOHLER® Command PRO®

7-14 hp Engines

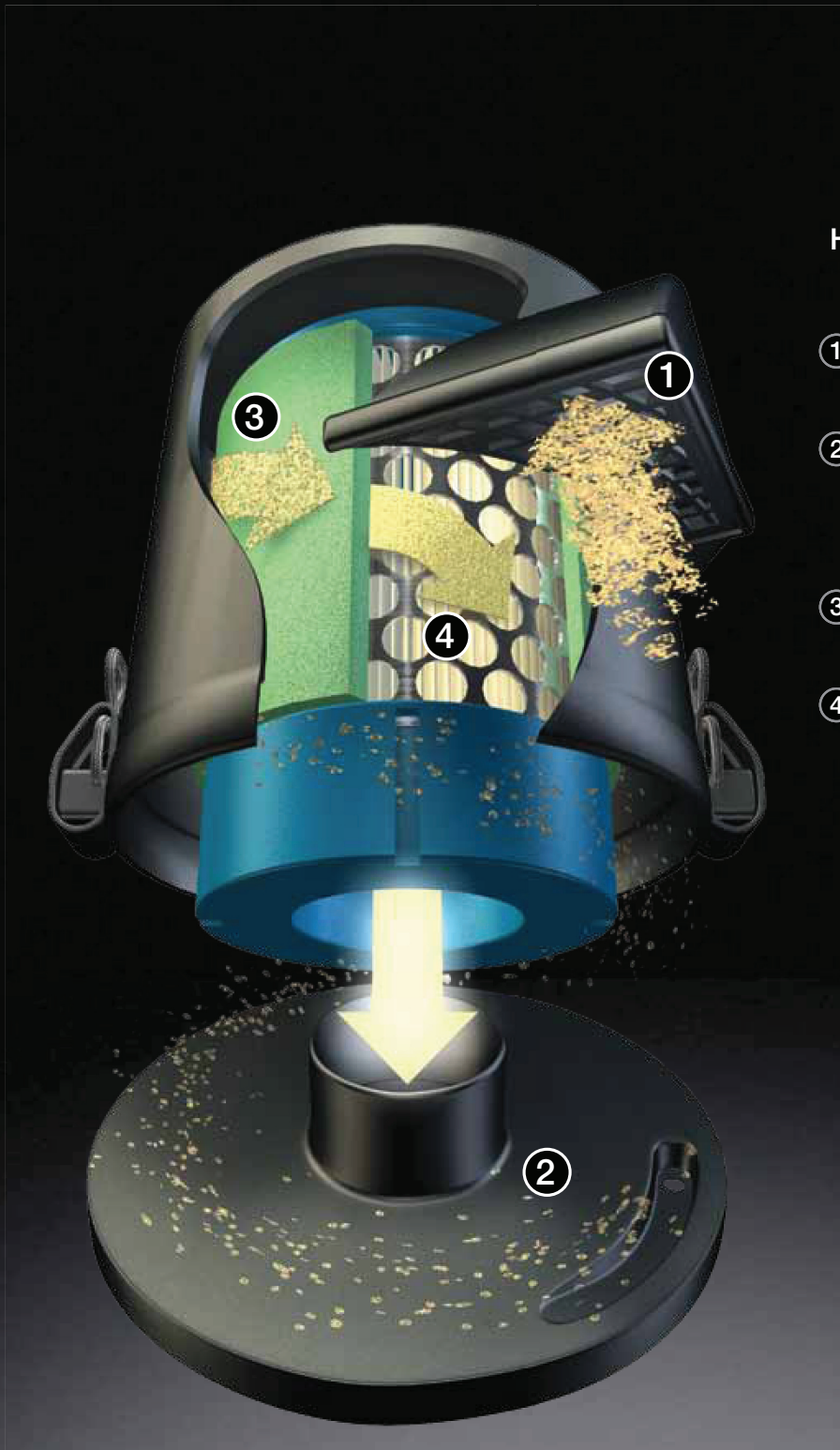


KOHLER®

KOHLER®

PERFORMANCE
ENGINEERING

Engineered to perform in the harshest environments, Quad-Clean™ all-season four-stage cyclonic air filter—a standard on Command PRO® 7-14 hp engines—protects the engine from airborne contaminants that can easily clog traditional air filters. Since the Quad-Clean air filter assembly isn't any heavier or bulkier than a conventional air filter, the engine's ergonomics and fuel economy aren't compromised.



How does Quad-Clean™ work?

- 1 The mesh screen at the air intake port provides first step of protection.
- 2 As air enters the air-cleaning chamber, it is circulated in a rapid, cyclonic motion that forces the large contaminants out of the engine.
- 3 The reusable, environmentally friendly foam pre-cleaner traps midsize contaminants.
- 4 Dual-metal mesh enforced, the pleated air filter traps the finest contaminants ensuring that only clean air enters the engine for maximum power and life of the engine.

Emissions:
Meets regulatory requirements around the world, including CARB Tier 3, EPA Phase III, EU Stage 2, RFI/EMC, EU Noise and EU Safety.

Service:
Backed by more than 13,000 dealers and distributors worldwide.

Warranty:
Three-year limited warranty covering all commercial applications globally.

What it takes to be a PRO.

The KOHLER® Command PRO® insignia is reserved for products that offer best-in-class features like our heavy-duty air cleaner, forged-steel crankshafts, advanced ignition module and cast-iron cylinder bore liner, making the Command PRO family of engines the standard for professional grade power and performance.



Industry Standard Dimensions and Interchangability.

Provides flexibility to power any new equipment or repower existing equipment without modifications.



Dependable All-Season Operation.

In colder months the Quad-Clean™ air filter can be reconfigured, without tools and in a matter of seconds, to recycle engine heat. Along with advanced electronic ignition, automatic compression release and dual ball bearings, the Command PRO® engine provides effortless starts in all weather and conditions.



Designed for Quiet Operation.

A fully integrated system, including a silenced air intake, sound-deadening muffler and alloy crankcase, creates a smoother, quieter performance.



Engineered for Enhanced Durability.

KOHLER® Command PRO® engines feature forged-steel crankshafts, cast-iron cylinder bores, tough Stellite®-faced exhaust valves with Tuffride®-coated stems and dual main ball bearings for maximum side-load characteristics. Oil Sentry™ protects engine in low oil conditions by automatically shutting the engine down.

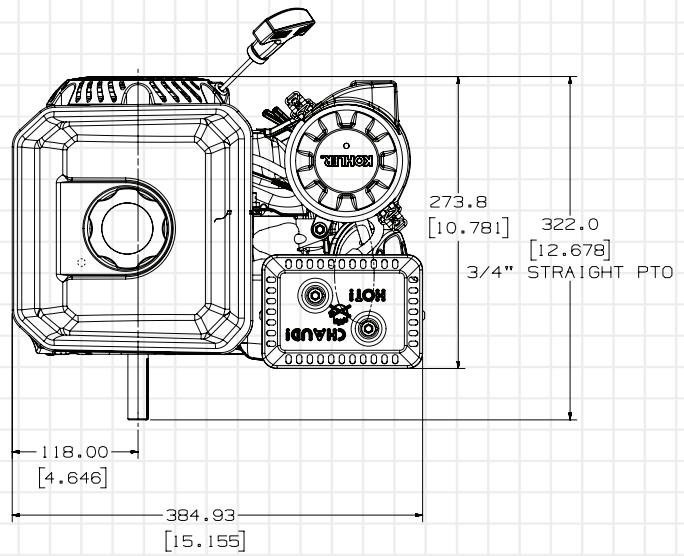


Efficient Ignition and Fuel System.

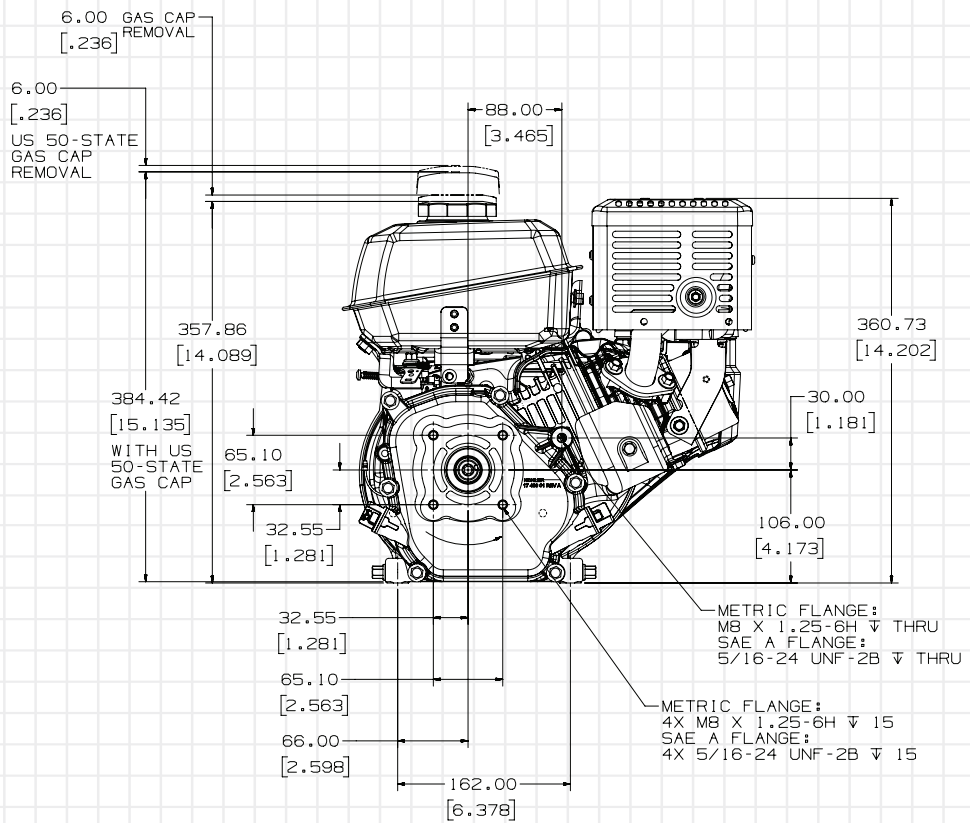
The KOHLER advanced ignition system reduces fuel consumption, while the large-capacity fuel tank allows for longer runs between fill-ups. Combined, these two features will save you money and time.

7-hp engines
(CH270)

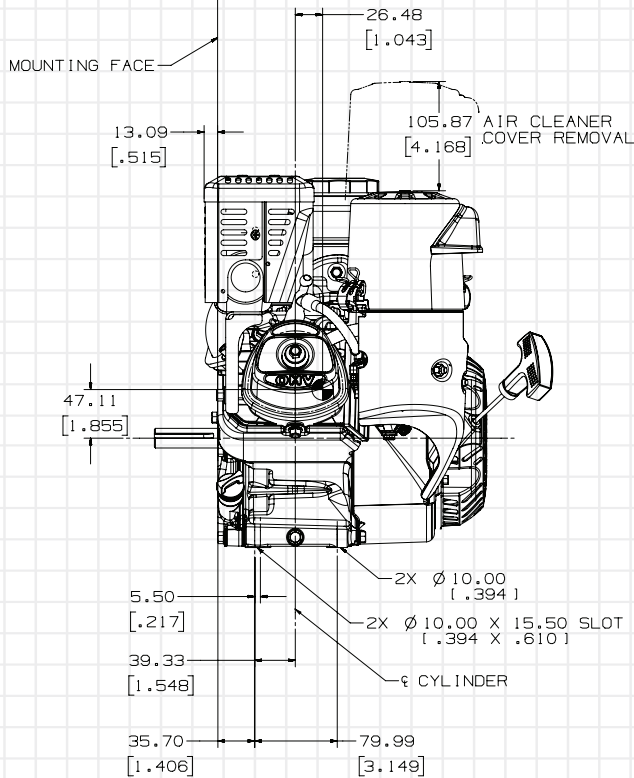
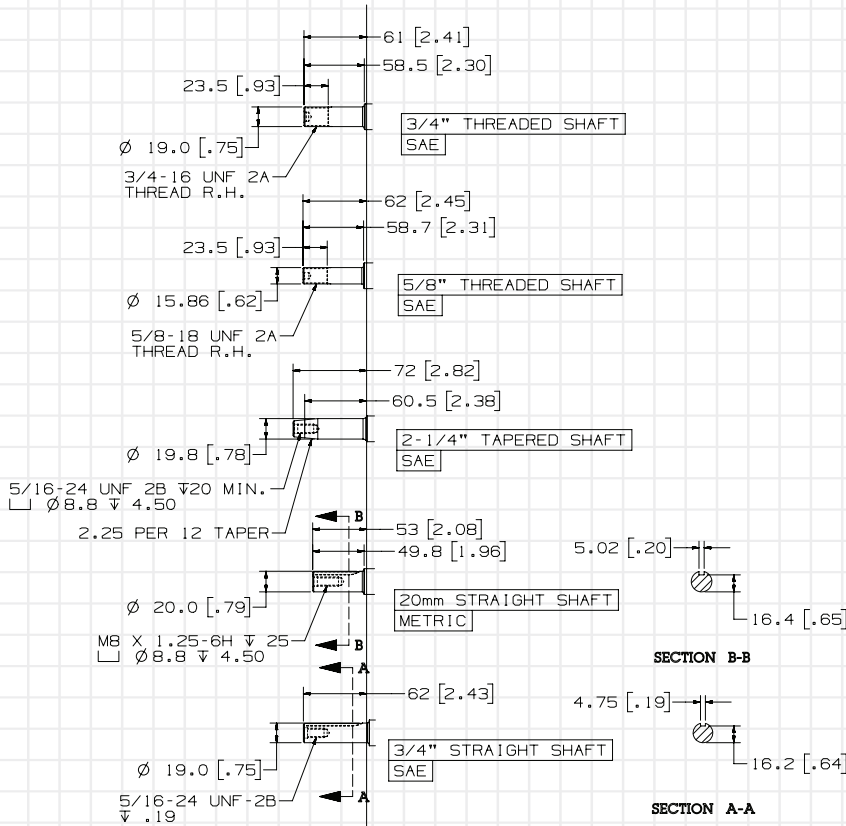
TOP VIEW



PTO VIEW

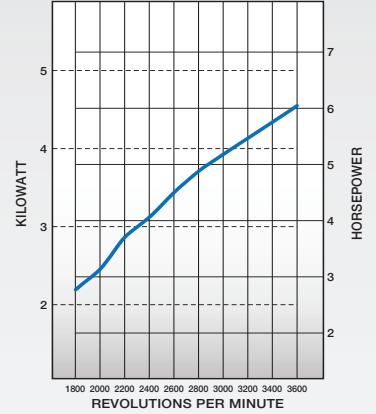


7-hp engines (CH270)

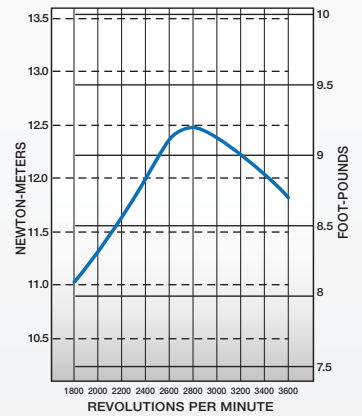


SHAFT VARIATIONS

VALVE COVER VIEW



Net Power



Net Torque